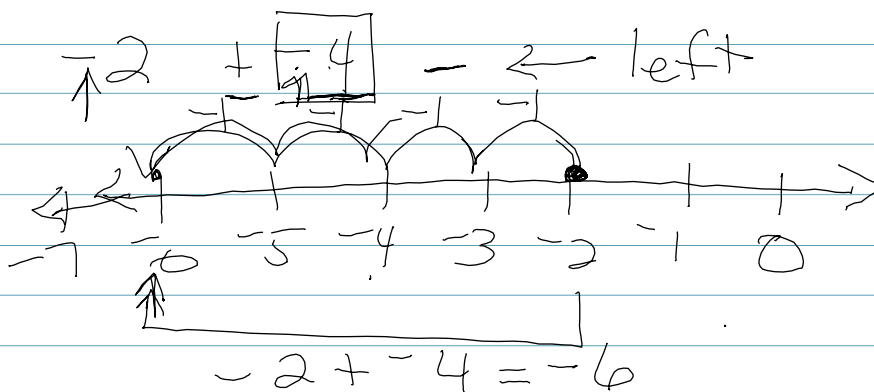
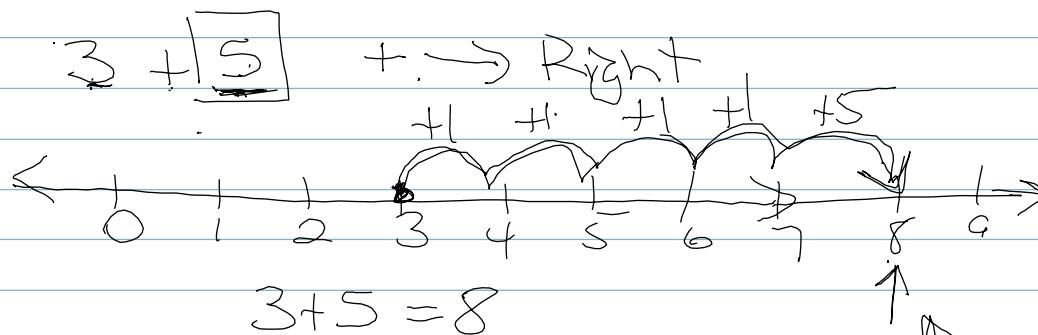


# Adding Integers w/ Like Signs

EQ: How do you add Integers with like signs?

$$\begin{array}{c} \boxed{+5} \\ \uparrow \\ 5 \end{array} \quad \begin{array}{c} \boxed{-5} \\ \uparrow \\ 5 \end{array}$$

Number line



Rule:

Add numbers, keep sign

$$\boxed{+} 3 + \boxed{+} 5 = \boxed{+} 8$$

$$\boxed{-} 2 + \boxed{-} 4 = \boxed{-} 6$$

Summary

Add the numbers, keep sign.

$$\begin{array}{c} + \quad + \quad = \quad + \\ - \quad - \quad = \quad - \end{array}$$

What is the sign when you add 2 neg. #'s